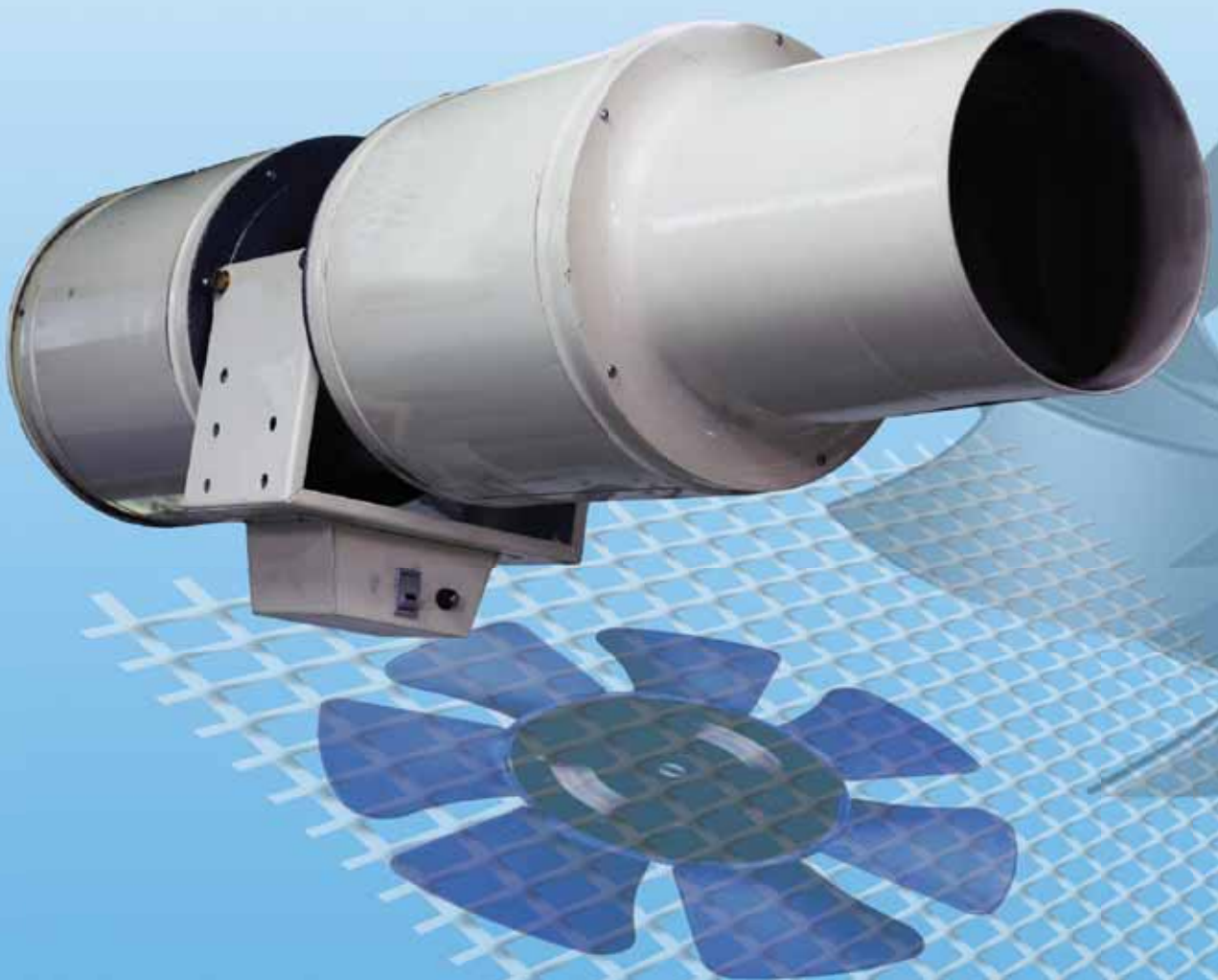


# Mini Jet Fan Series

Model Nos.: JF



# CONTENTS

## Jetnozzle System

1. Function	3
2. Technical Data	3
3. Dimensional Drawing	4

## Jetvent System

1. General Discription	5
2. Features	5
3. System layout	6
4. System Analysis	7
5. System Comparison	8
6. System Simulation (CFD)	9
7. Specification	11
8. Dimensional Drawing (fbund Type)	12
9. Dimensional Drawing (Box Type)	13

## LINEVENT SYSTEM

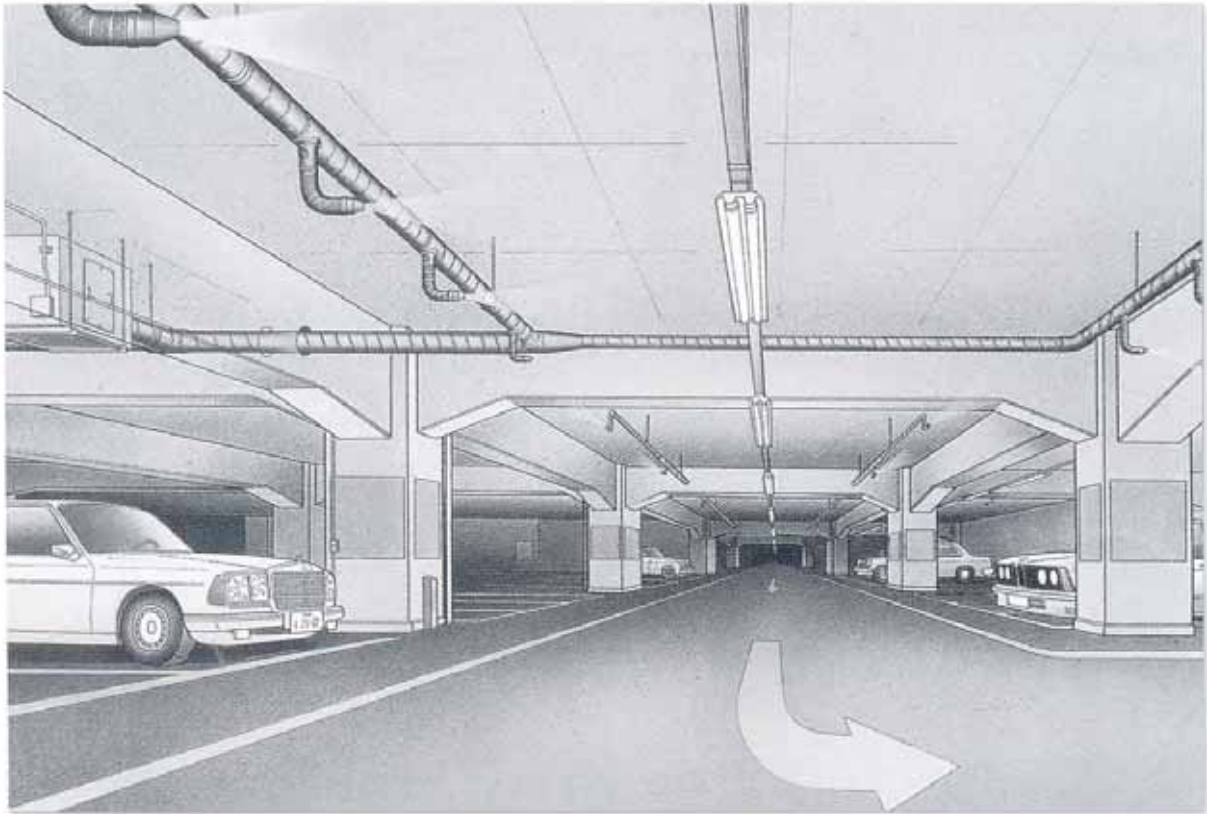
• Features and Description	14
• Dimensional Drawing	15

## HANGER FAN

• Features and Description	16
• Installation case (For Supply)	17
• Installation case (For Exhaust)	18
• Dimensions and part list	19

## Function

The Jetnozzle system usually offers the ideal solution to ventilation problems in large premise specially for the underground car parking lots, due to a high number of air changes in the occupied lone. The ventilation air is directed by small jets of air from special nozzles to the places where it is needed, e.g. where more air movement is required.



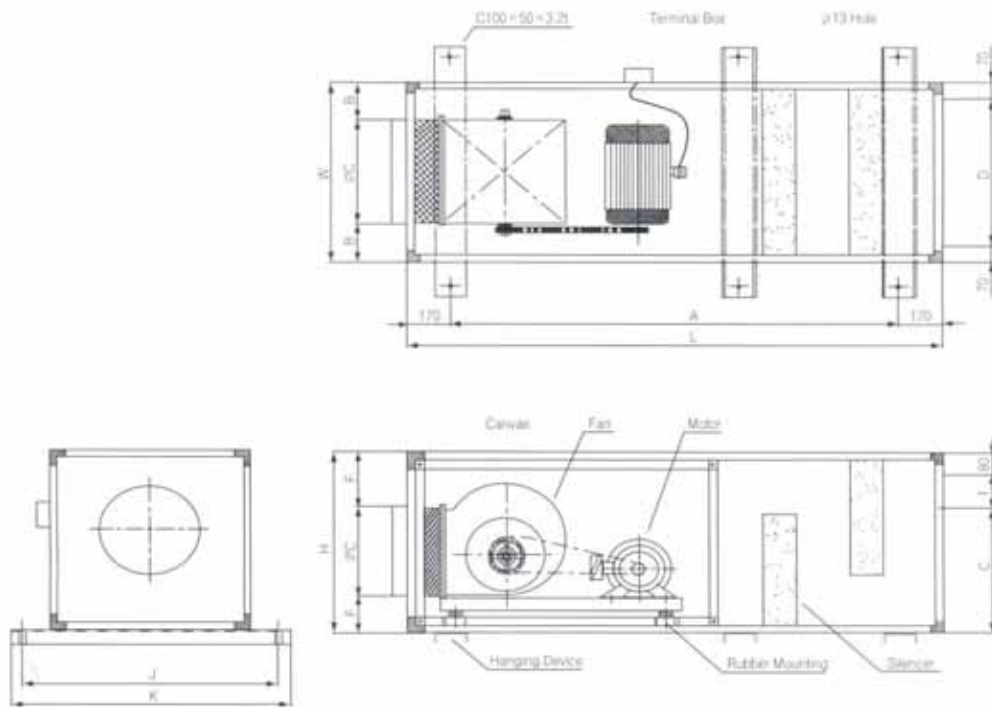
## Technical Data

Item	Unit	JIF-150	JIF-220S	JIF-220	JIF-370
Air Flow	CMH	1,200	1,800	2,200	3,000
S Pressure	mmAq	140	140	140	140
Power	□ / V / Hz	1 / 380 / 50	1 / 380 / 50	1 / 380 / 50	1 / 380 / 50
Motor	KW	1.5	2.2	2.2	3.7
Noise	dB(A)	60	62	63	64
Dimension	L x W x H	1,500 x 660 x 500	1,600 x 660 x 580	1,600 x 660 x 660	1,600 x 660 x 660
Weight	kg	98	130	135	140

\* This products can be changed for improving models without prior notice.

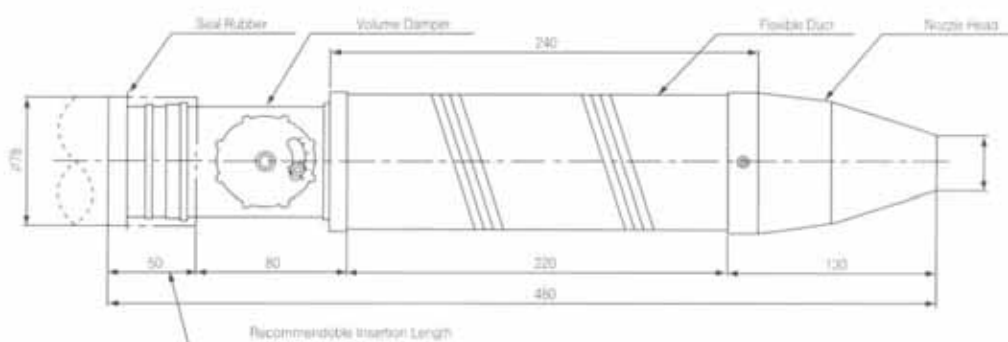
## Dimensional Drawing

### Jet Induction Fan (Model JIF Series)



Model	Motor	L	W	H	A	B	□ C	D	E	F	G	I	J	K	Weight
JIF-150	1.5KW	1500	660	500	1160	205	250	540	120	130	80	340	840	900	98KG
JIF-220S	2.2KW	1600	660	580	1260	180	300	540	95	185	80	420	840	900	130KG
JIF-220	2.2KW	1600	660	660	1260	180	300	540	95	265	80	500	840	900	135KG
JIF-370	3.7KW	1600	660	660	1260	155	350	540	70	140	80	500	840	900	140KG

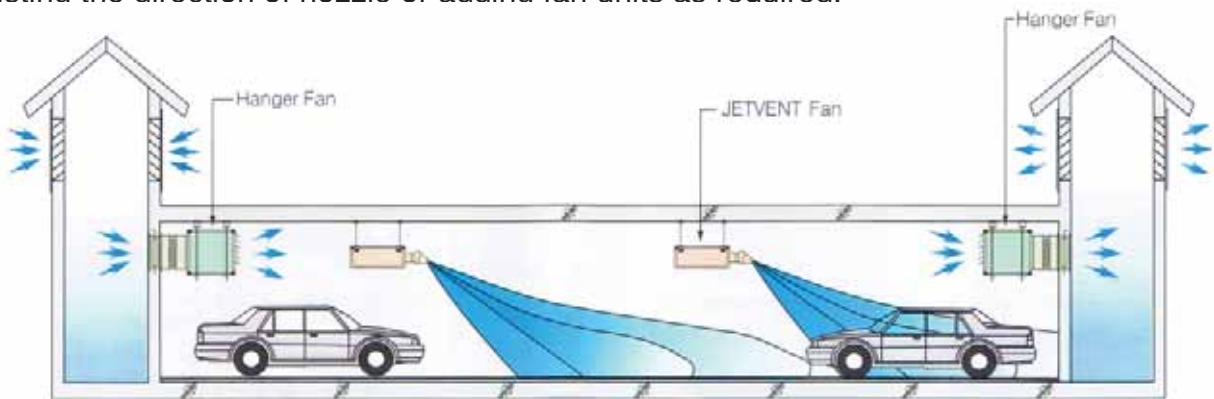
### Jet nozzle (Model: JIN-80)



## General Description

The Jetvent System has been developed primarily to ventilate underground parking lot. The system a successor to the conventional duct system. is popular ventilation for the underground parking Lot. The Jetvent system features easy of construction, compact size and enhanced fan efficiency while retaining the excellent features, know-how and advantages of the Jet-nozzle System.

A high speed air jet blown from the nozzle increases in volume as it induces the ambient air while losing velocity as it goes away from the nozzle. It is the law of conservation of the momentum. Fresh air induced and transported according to the principle. Other fan units are installed within reach of the first air jet so that fresh air is eventually carried forward to the necessrui part of. or thruoughout. a fan casing without using duct. If the layout of a garage is changed. for example. the ventilation system can be adopted to the new layout simply by adjusting the direction of nozzle or adding fan units as required.



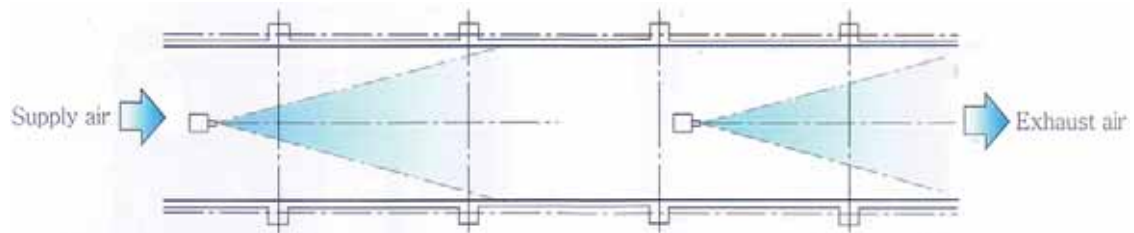
(Fig-1) System Flow

## Features

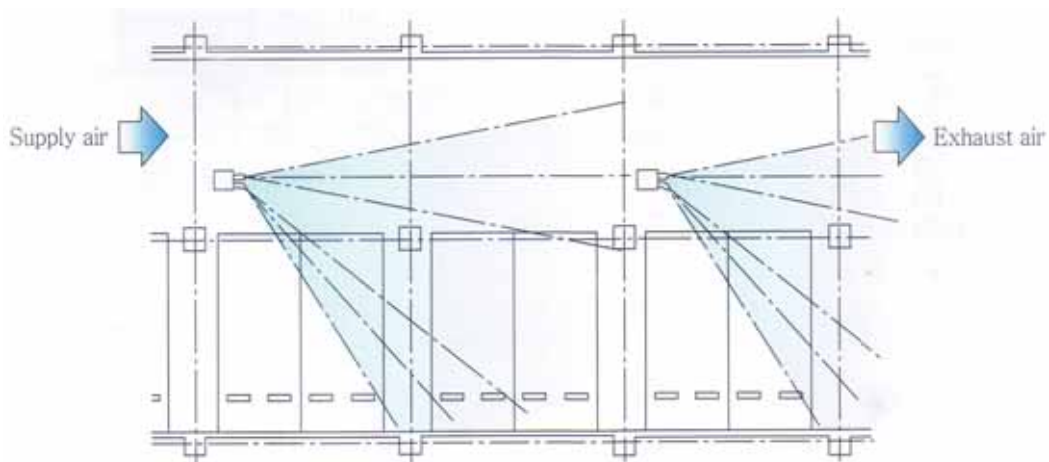
- Ductless  
No ducts are used and the construction is quite easy. The Jetvent Fan units are simply installed at suitable place.
- Air Blown Direction  
Nozzle di rection can be varied. The most suitable variation is selected according to the shape of the building and application. A single Jetvent Fan unit can create a main air stream and eliminate air stagnation in the underground parking lot. The units can be arranged neatly because there is no need to align the unit with the direction of the air stream.
- Simple to Install  
The Jetvent Fan un its are simply suspended from the ceiling with hanger bolts.
- Ultra Thin  
Very Thin fans are used. The Jetvent Fan unit. only 670mm high included hanging bracket for the Single Nozzle. The Multi Nozzle fans have 280mm height which included the universal and fan cabinet
- Energy Saving  
No energy loss due to ducts. The air flow going th rough supply and exhaust fans can be easily controlled to ventilate because of dilution and diffusion.
- Low Noise  
The Jetvent Fan mut incorporates a small sized mixed now fan with a lower noise level. The noise is 55dB(A) at 1.5 meter from the unit.
- Maintenance Free  
The lubrication free motor bearings require no maintenance.
- Electrical Power Source  
Electric wiring is simple because the power source is IPh x 220Voltx 50/60Hz

# System Layout

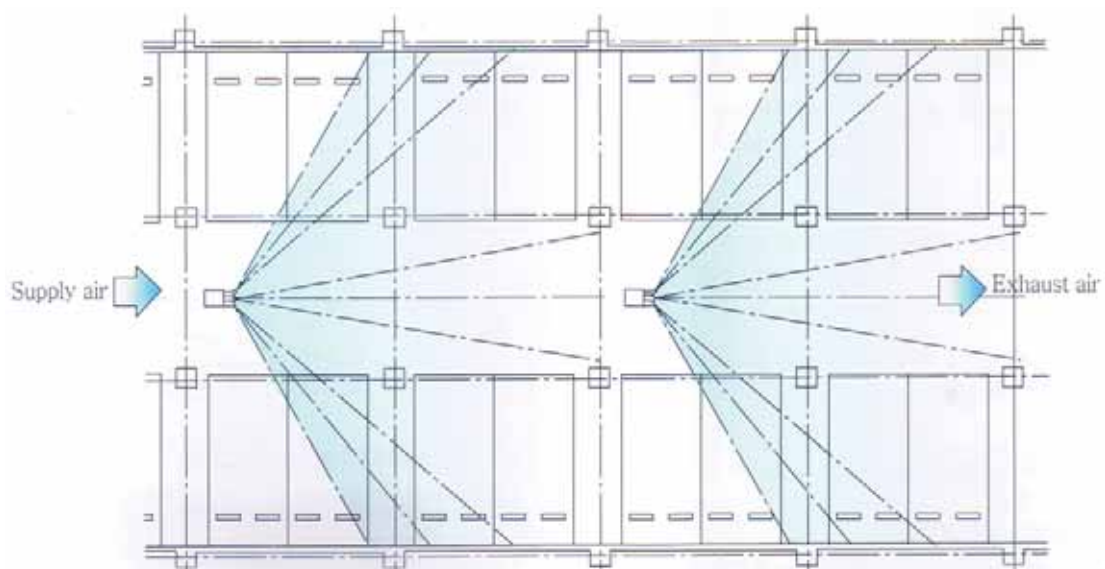
## 1) Single Nozzle (For passage only)



## 2) Double Nozzle (For passage and parking area)

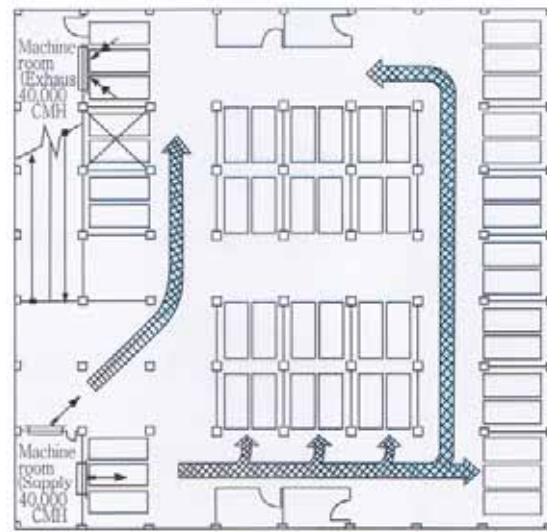


## 3) Triple Nozzle (For passage and both parking area)

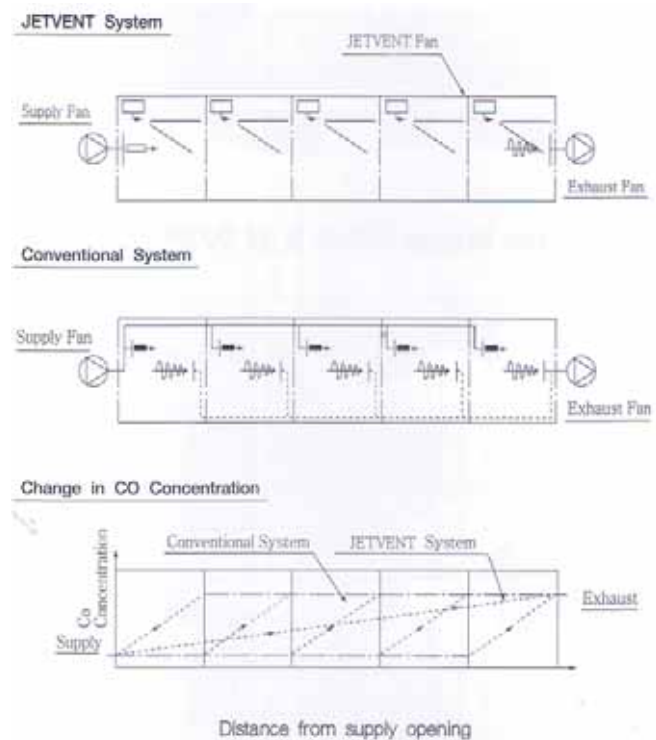


# System Analysis

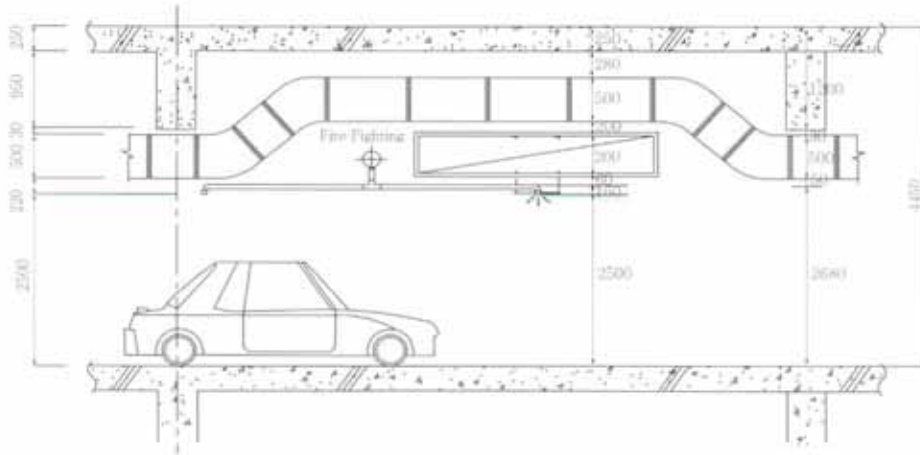
Item	Description
System	Overall air moving
Efficiency	Contaminants air diluted quickly by large quantity of air movement
Affect	Contaminants affect in the blown stream side
Installation	Easy to install
Composed	Compact moduled fan unit to be installed depends on covered area
Space	Ductless slim fan makes low ceiling to save building cost
Noise	Rather low noise
Cost	Inexpensive



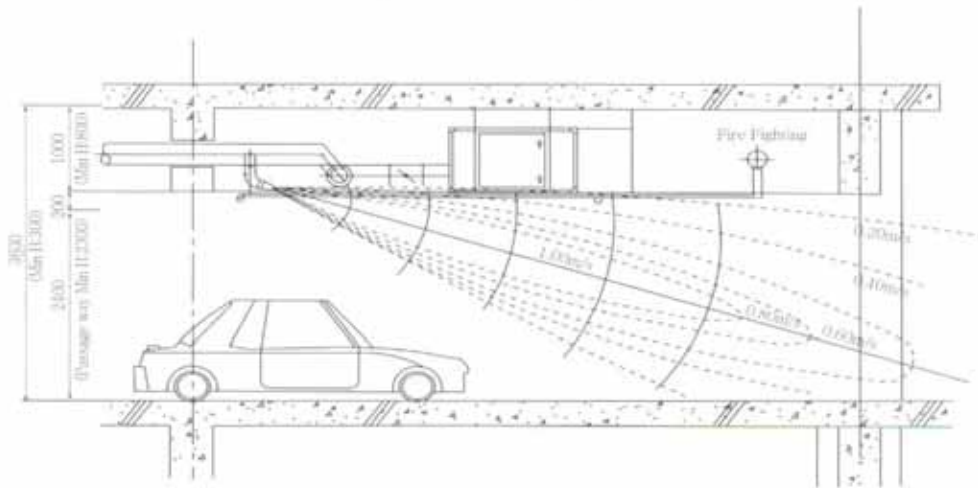
(Fig-2) System Flow



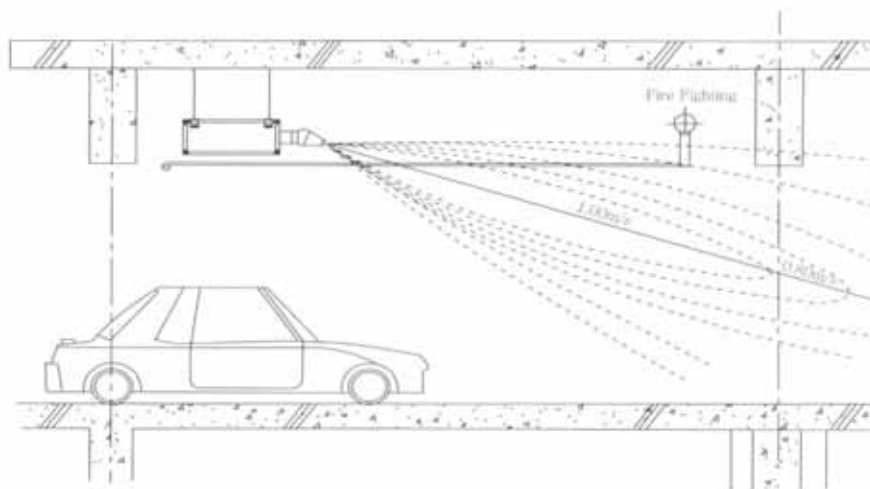
(Fig-3) Comparison of JETVENT System and Conventional System



(Fig-2) Conventional System



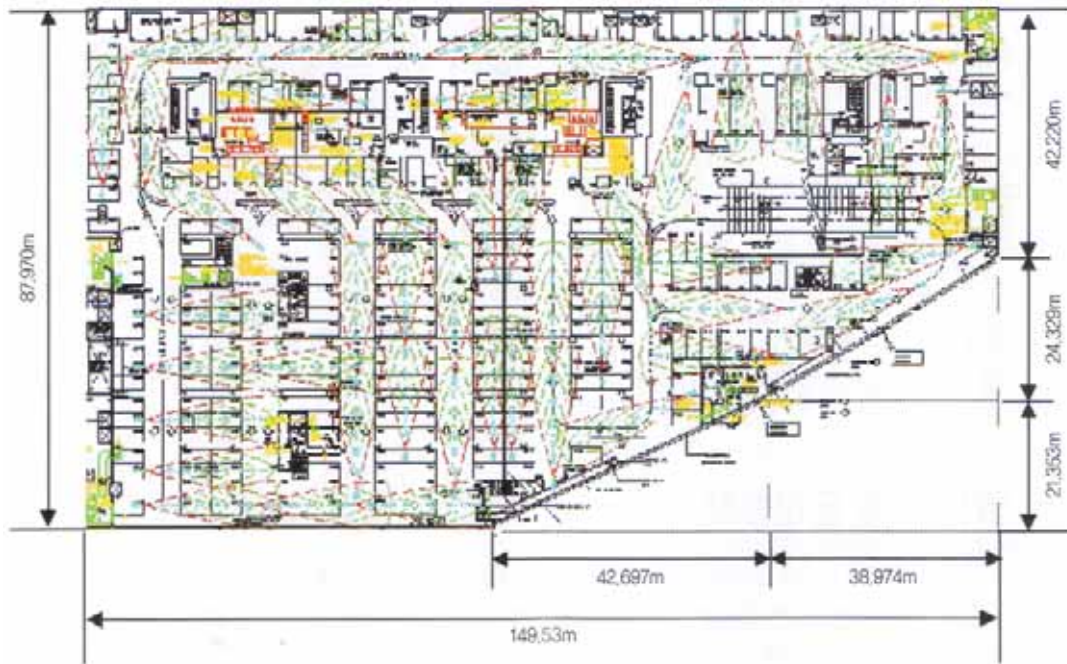
(Fig-3) Jet Nozzle System



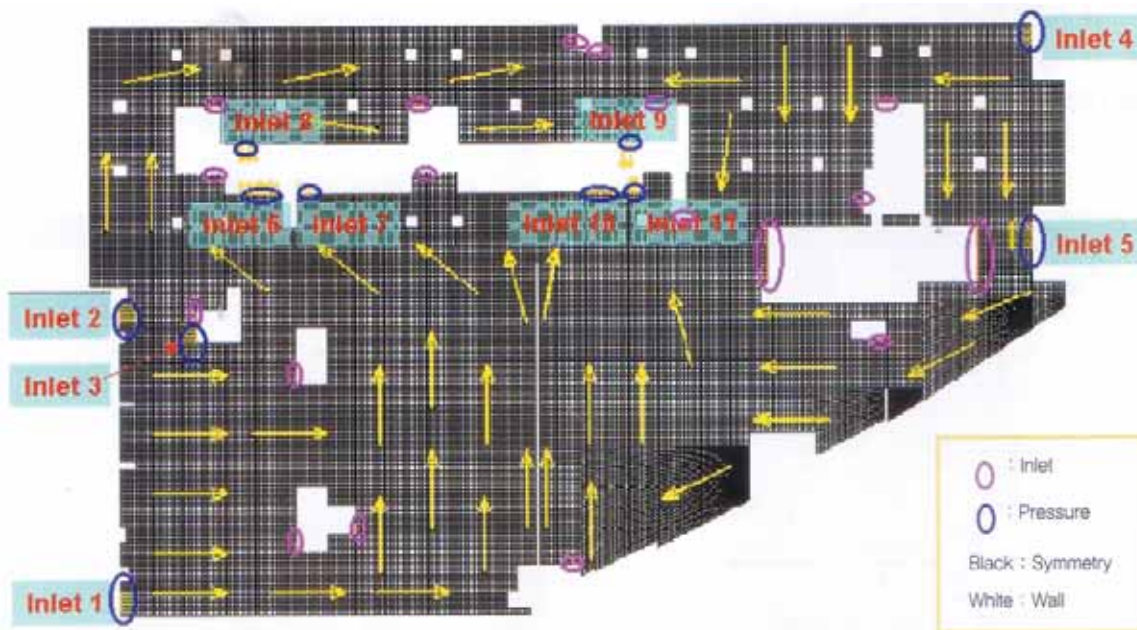
(Fig-4) JETVENT System



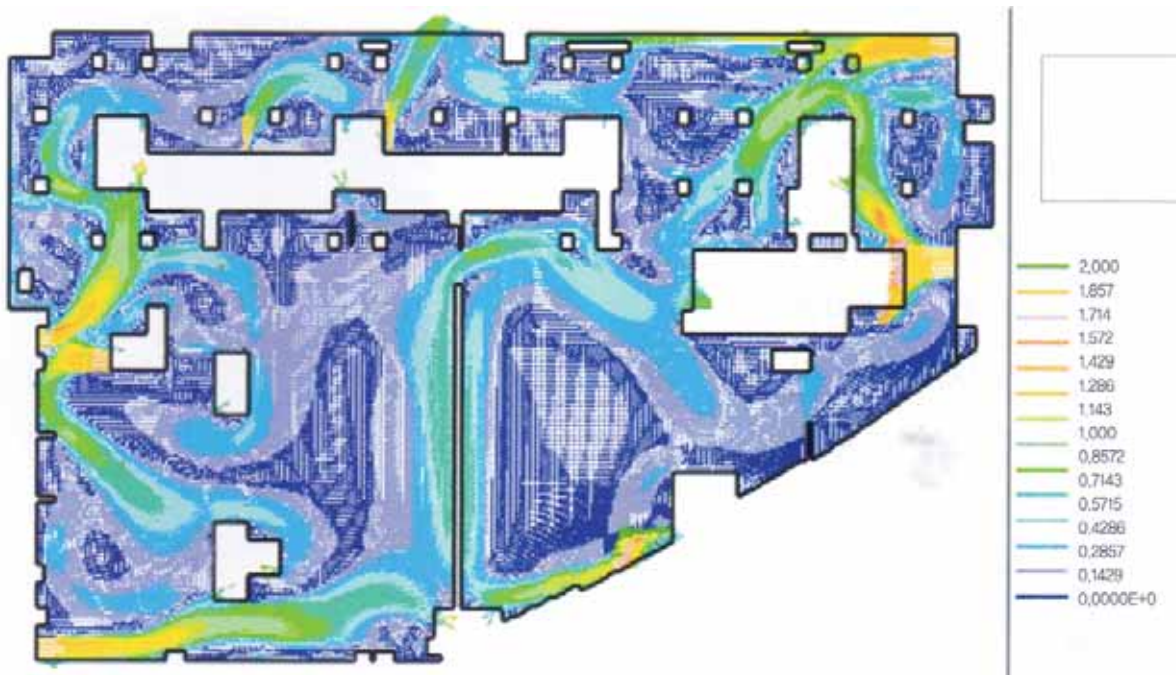
# System Simulation (CFD)



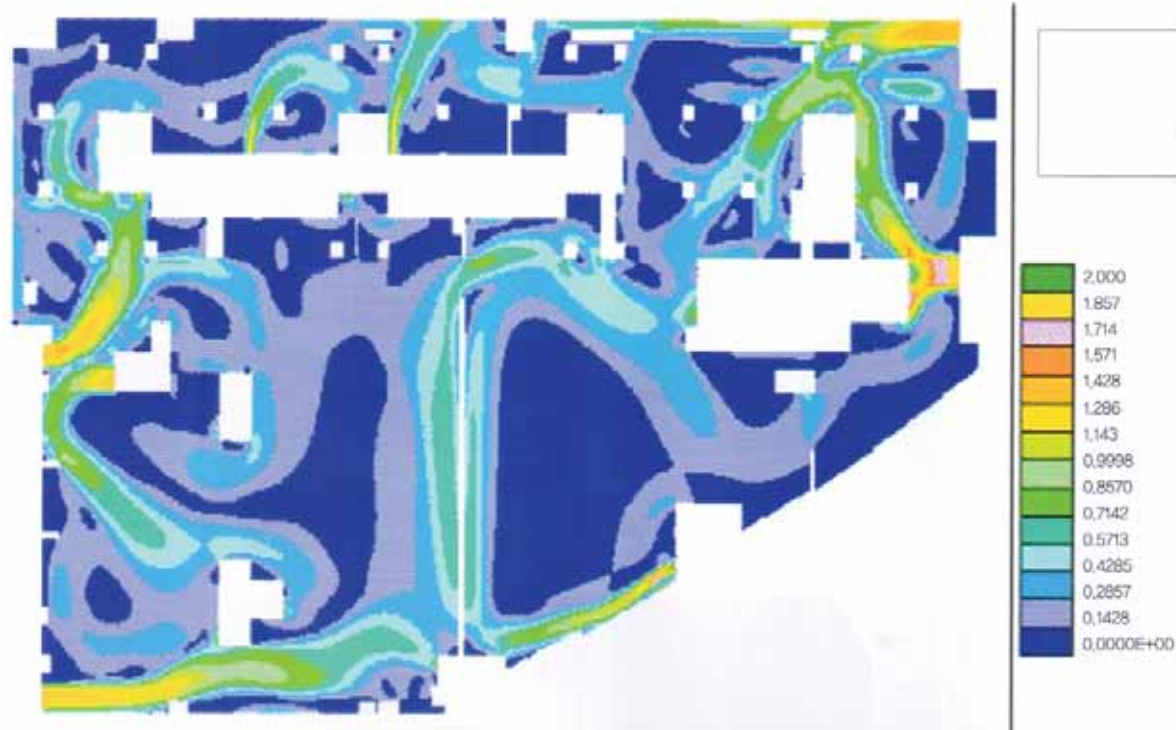
Geometry of underground parking lots



Boundary conditions



Preliminary Output (velocities)



Preliminary Output (Speed contours)

# Specification

## 1) Round Type (One-nozzle)

No	Item	Unit	Models			
			JVF-350AX	JVF-450AX	JVF-550AX	JVF-650AX
1	Nozzle	EA	One nozzle	One nozzle	One nozzle	One nozzle
2	Nozzle Diar	mm	180	250	250	300
3	Air Flow	CMH	1,800	2,800	2,500/3,500	3,500/6,800
4	Phase	Ph	1	1	1	1/3
5	Voltage	Volt	220	220	220	220/380
6	Cycle	Hz	60	60	60	60
7	Revolution	RPM	3,200	3,200	3,200	3,200
8	Ampere	Amp	0.8	2.0	2.8	2.7
9	Power consumption	Watt	175	350	500	1,200
10	Sourd Level	dB(A)	58	65	62/68	60/67
11	Weight	KG	16	25	28	35

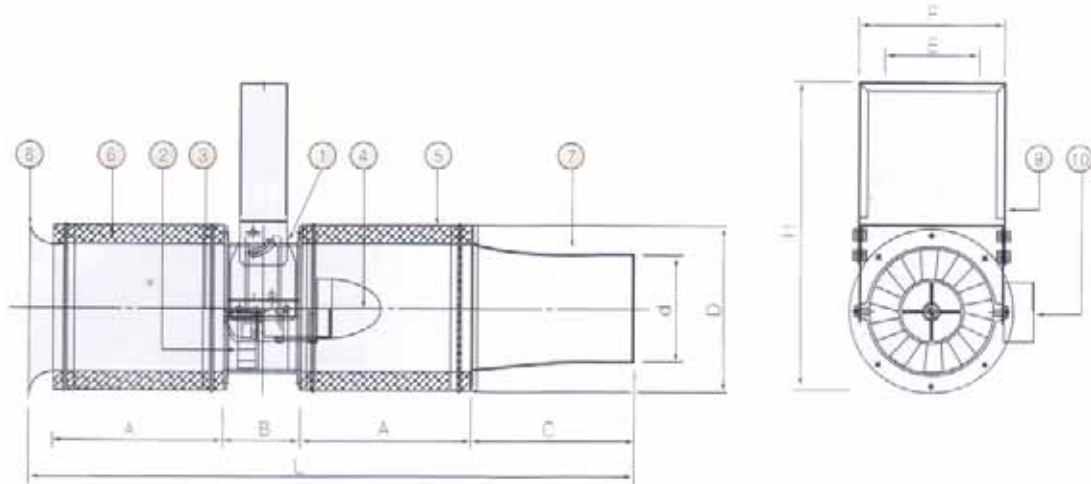
## 2) Box Type (Multi-nozzle)

No	Item	Unit	Models					
			JVF-200D	JVF-200T	JVF-500D	JVF-500T	JVF-600D	JVF-600T
1	Nozzle	EA	Double	Triple	Double	Triple	Double	Triple
2	Nozzle Diar	mm	100 x 2	85 x 3	120 x 2	100 x 3	140 x 2	120 x 3
3	Air Flow	CMH	1,000	1,000	1,800	1,800	2,300	2,300
4	Phase	Ph	1	1	1	1	1	1
5	Voltage	Volt	220	220	220	220	220	220
6	Cycle	Hz	60	60	60	60	60	60
7	Revolution	RPM	840	840	890	890	1,050	1,050
8	Ampere	Amp	0,8	0,8	1.6	1.6	1.8	1.8
9	Power consumption	Watt	170	170	360	360	450	450
10	Sourd Level	dB(A)	54	54	61	61	62	62
11	Weight	KG	30	31	40	41	43	44

D: Double outlet nozzle

T : Triple outlet nozzle

## Dimensional Drawing (Round Type)



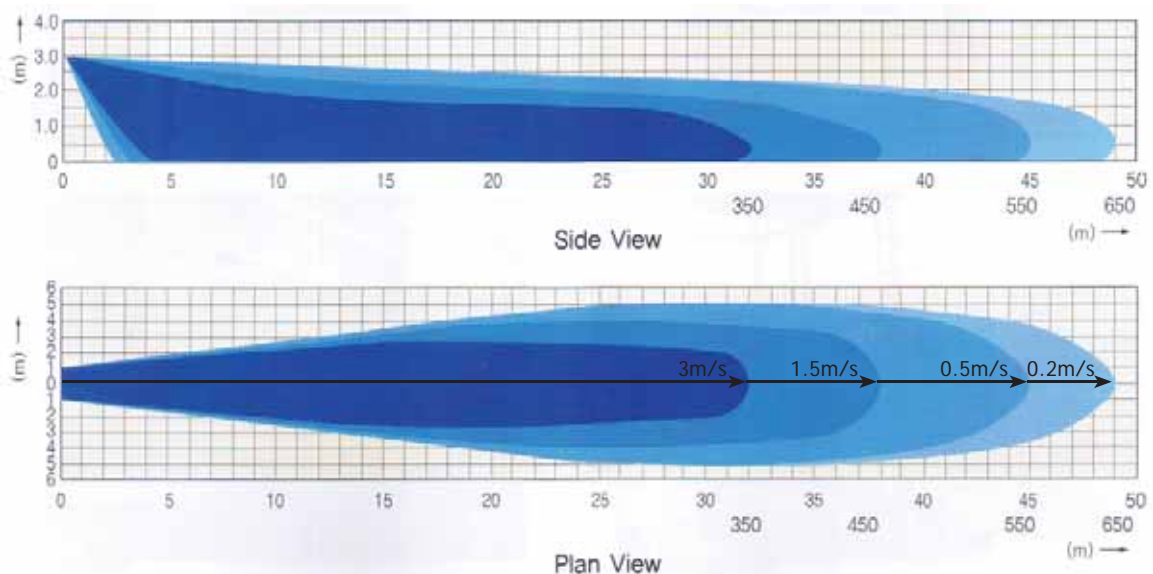
### Dimension

Model	L	d $\square$	D	A	B	C	E	F	H
JVF-350AX	1060	180	280	285	130	320	190	250	600
JVF-450AX	1220	250	360	320	210	330	240	320	750
JVF-550AX	1320	250	360	370	210	330	240	320	750
JVF-650AX	1560	300	440	500	190	310	320	380	800

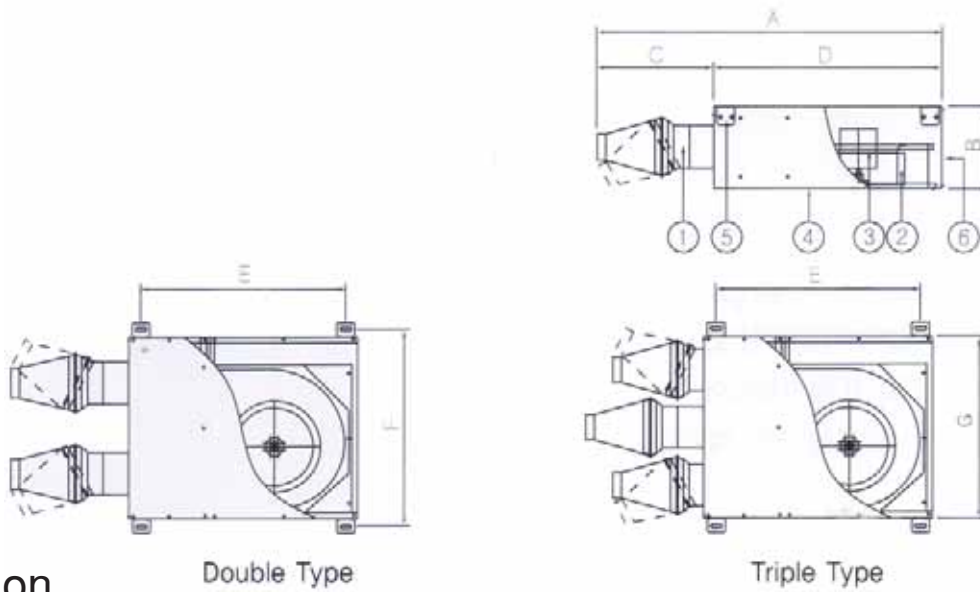
### Part List

No	Description	Material	Remark	No	Description	Material	Remark
1	Fan Casing	Steel, ABS		6	Inlet Silencer	Steel	W/Insulation
2	Impeller	Cast Aluminum		7	Nozzle	Aluminum	
3	Shaft	Carbon Steel		8	Bell mouth	Steel, ABS	
4	Motor	Electric Steel		9	Bracket	Steel	
5	Outlet Silencer	Steel, ABS	W/Insulation	10	Terminal Box	Steel	

### ISOVEL Profile



# Dimensional Drawing (Box Type)



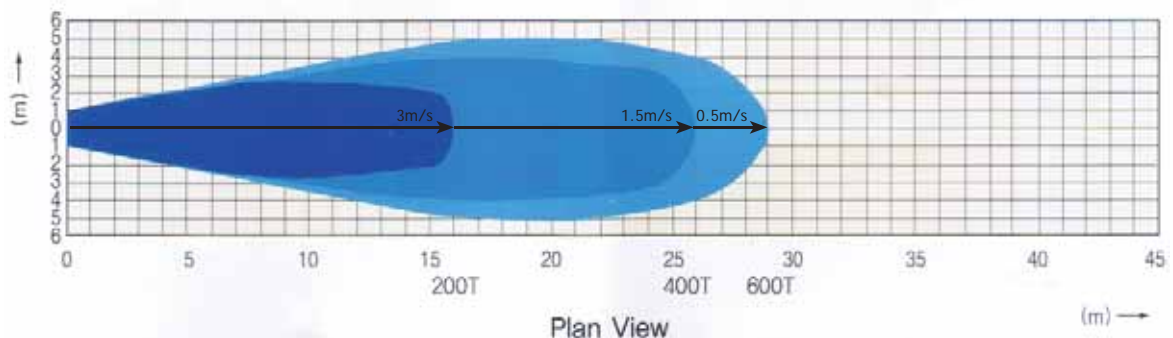
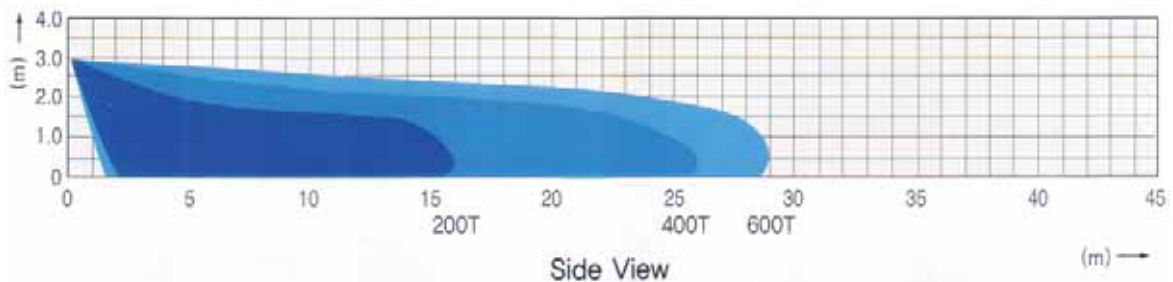
## Dimension

Model	A	B	C	D	E	F	G
JVF-200D	1130	255	380	750	670	670	650
JVF-500D & T	1140	255	310	830	700	730	680
JVF-600D & T	1400	320	310	1090	1020	1020	990

## Part List

No	Description	Material	Remark	No	Description	Material	Remark
1	Universal Nozzle	Aluminum		4	Casing	GI	
2	Fan	GI	Slim Type	5	Bracket	GI	
3	Motor	Electric Steel		6	Screen	GI	

## ISOVEL Profile



# Linevent Fan

## Feature

- Wide ventilation effect due to long impeller
- Draft free due to medium tip velocity required
- Maintenance free due to lubrication free
- Easy Installation
- Energy saving



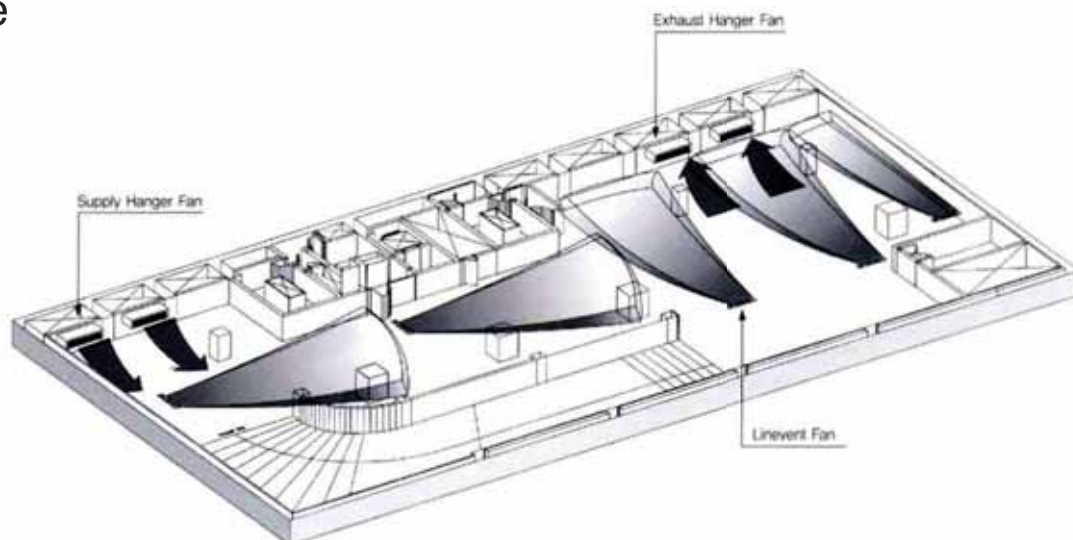
## Application

- Under ground car parking lots
- Air curtain purpose
- To prevent condensation

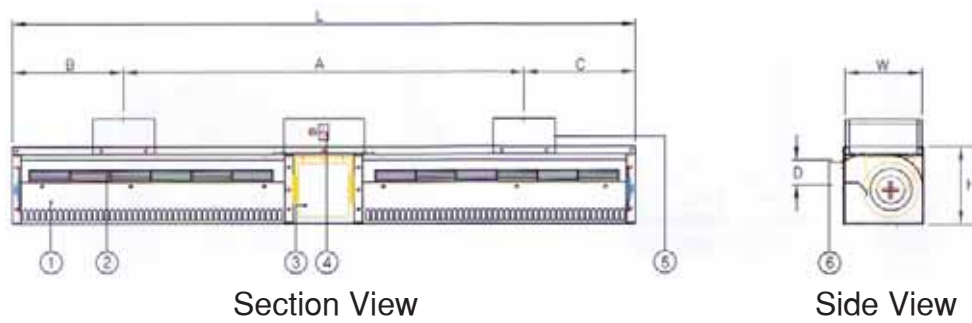
## Description

Item	Unit	Models		
		LVF-200C	LVF400C	LVF-600C
Fan Type		Cross Flow Fan	Cross Flow Fan	Cross Flow Fan
Air Volume	CMH	30	40	50
Power supply	□ / V / Hz	1/220/60	1/220/60	1/220/60
Power consumption	Watt	110	140	200
Ampere	A	0.5	0.7	1.0
Outlet Size	mm	940x50	1,300x45	1,300x45
Tip velocity	m/sec	11	12	15
S Pressure	mmHg	3.2	3.2	3.2
Sound level	dB(A)	57	58	60
Weight	KG	14	15	17
Length	mm	1,160	1,560	1,560
Width	mm	160	180	180
Height	mm	170	180	180

## Profile



# Dimensional Drawing



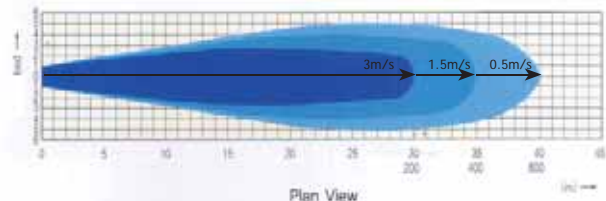
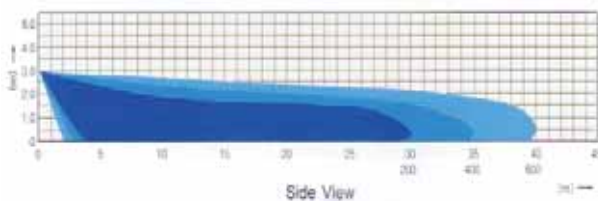
## Dimension

Model	A	B	C	D	L	W	H
LVF-200	650	135	135	700x50	920	160	170
LVF-400	800	180	180	940x50	1,160	160	170
LVF-600	1040	260	260	1,400x50	1,560	160	170

## Part List

No	Description	Material	No	Description	Material
1	Casing	Aluminum/Steel	4	Switch Box	Ass'y
2	Impeller	Aluminum/ABS	5	Bracket	Steel
3	Motor	Ass'y	6	Air Guide	Aluminum/Steel

## ISOVEL Profile



# HANGER FAN

## Feature

- Fan room less
- Maintenance Free
- Easy to Install
- Maintenance Free
- Easy to Install
- Volume controllable by pararell fans arrangement

## Application

- Under ground car parking lots
- In Line Fan for Large volume
- Smoke Extraction Fan

## Installation





# Installation case

1. Fan Room

1. Fan Room



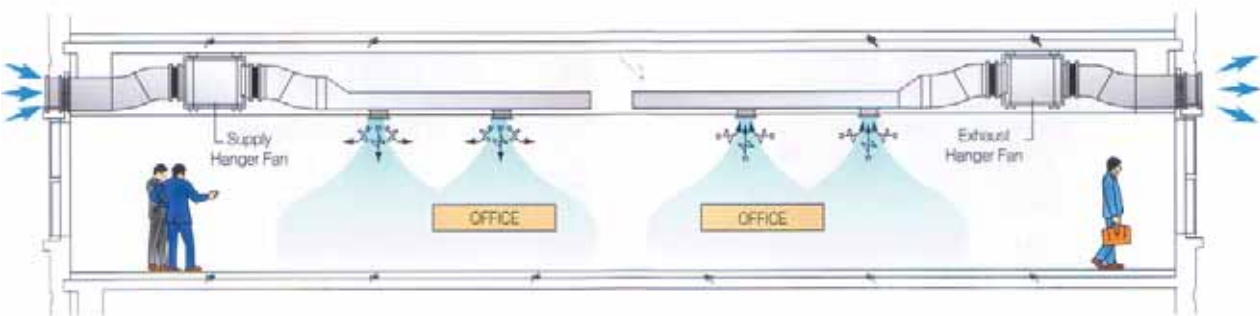
2. Fan Room

2. Fan Room



3. Ceiling

3. Ceiling





## SEACON ENGINEERING EQUIPMENTS PTE. LTD

Specialised Engineering and HVAC Equipment Supplier

10 Anson Road #05-17 International Plaza Singapore 079903

Co. Reg. No. : 200917905H GST Reg. No. : 200917905H

WebSite: <http://seaconequipment.com>

Email : [seaconeng@yahoo.com](mailto:seaconeng@yahoo.com), [director@seaconequipment.com](mailto:director@seaconequipment.com)

SEACON  
EQUIPMENTS



### SEACON ENGINEERING EQUIPMENTS PTE. LTD

Specialised Engineering and HVAC Equipment Supplier

10 Anson Road #05-17 International Plaza Singapore 079903

Phone: +65 9795 0350 Fax: +65 6762 2664

Co. Reg. No. : 200917905H GST Reg. No. : 200917905H

Web Site: <http://seaconequipment.com> Email : [seaconeng@yahoo.com](mailto:seaconeng@yahoo.com)

#### 邱志强

Kasdi Qiu (邱志强)

HP : +65 9795 0350

Director

E-mail : [seaconeng@yahoo.com](mailto:seaconeng@yahoo.com)

Specialize in:

HVAC Equipment Manufacturer  
Marine Offshore Design  
Engineering Design  
Engineering Drawing

SEACON



Specialize in HVAC Manufacturing:

- Air-Cooled Condensing Unit
- Chillers Unit
- Package Unit
- Stainless Steel AC Unit
- Ex-Proof Unit
- Custom-made AC unit

From Marine to Industrial to Commercial air conditioning unit. We provide you the best support and designs to your needs.