

CEILING CONCEAL UNIT

MODEL: CCHB/CCHP (DX / CW)

CAPACITY: 0.8 to 5.0 Tons

10,000 to 60,000 BtuH

2.9 to 17.6 KW

CONDENSING UNIT

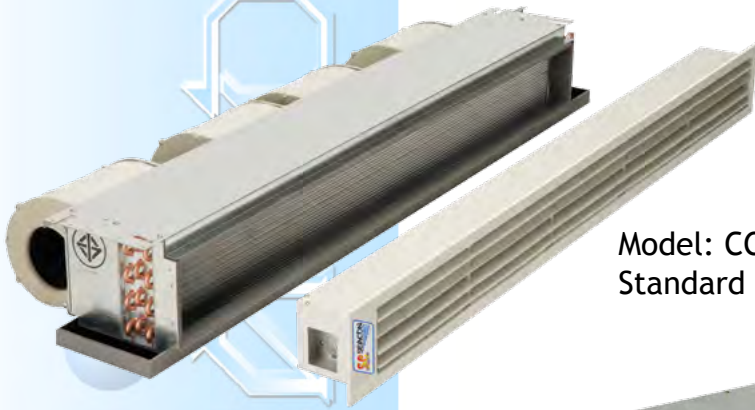
MODEL: GS-V-CU/FG-H-CU



Features/Benefits

Concealed ceiling units are built into the false ceiling, leaving only the suction and discharge grilles visible. Because of this the grilles can be placed wherever you want and blend with any interior decor. The grilles allow uniform temperature distribution in large or heavily partitioned areas. Not only are concealed ceiling units visually unobtrusive, they are also among the quietest types of air conditioning.

Indoor Unit



Model: CCHB
Standard ceiling conceal fan coil unit with louver.

Model: CCHP
Standard ceiling conceal fan coil unit with automatic rotation louver and return prenum come with air filter.



Condensing unit type

Single-Fan Type
Model: GS-V-CU



Long life GS-V-CU condensing unit as its casing made of high quality steel. Able to operate in any air conditions. High performance in heat exchanging with low noise level.

Twin-Fan Type
Model: GS-V-CU



Fiber glass Type
Model: FG-H-CU



Durable: The casing of "FG-H-CU" condensing unit is made from finely selected quality fiberglass resists to erosion and rust in any kind of weather conditions, an ideal choice for homes, residences, tannery and seafood processing factories located in seashore where acidic climate erodes metallic surfaces. Available with Copper Fin and Aluminium Fin to select for the application

PERFORMANCE DATA

INDOOR UNIT										
MODEL: CCHB / CCHP		300	400	600	800	1000	1200	1200	1600	2000
Nominal Capacity	BTUH	10,000	12,000	18,000	24,000	30,000	36,000	36,000	50,000	60,000
	Tons	0.83	1.00	1.50	2.00	2.50	3.00	3.00	4.17	5.00
	WATT	2,928	3,514	5,271	7,027	8,784	10,541	10,541	14,641	17,569
Evaporator Blower	TYPE	Multi Blade Centrifugal Blower								
Air Flow Rate	CFM	300	400	800	800	1,000	1,200	1,200	1,600	2,000
	CMH	510	680	1,359	1,359	1,699	2,039	2,039	2,718	3,398
Rated Power Input	WATT	1,016	1,273	1,875	2,595	2,955	3,437	3,407	5,114	5,934
Rated Current	50Hz AMP	4.95	6.91	10.1	12.5	18.29	19.39	9.39	12.68	13.78
EER	WATT / WATT	2.88	2.76	2.81	2.71	2.97	3.07	3.09	2.86	2.96
	BTU / WATT	9.84	9.43	9.6	9.25	10.15	10.47	10.57	9.78	10.11
Motor	Power	WATT	30	65	130	65 x 2	130 x 2			
	Current	50Hz AMP	0.4	0.7	1	0.7 x 2	1 x 2			
Power Supply	V / P / Hz	220 / 1 / 50								
Power Supply	V / P / Hz	208 / 1 / 60								
Connection										
Suction Line	INCH (OD)	1/2	5/8	3/4						
Liquid Line	INCH (OD)	3/8							1/2	
Water In & Out	INCH (OD)	1/4								
Dimension										
Width	mm.	736	905	1,203	1,403	1,692	1,829	2,134		
Height	mm.	227							277	
Depth	mm.	449								
Weight	KGS.	20	26	31	37	47	58	70		
Condensing Unit										
MODEL: GS-CU / FG-CU		10	12	18	25	30	361	363	50	60
Compressor	TYPE	Rotary / Scroll / Reciprocating								
Power	WATT	953	1,203	1,956	2,476	2,776	3,196	3,166	4,582	5,402
Current	AMP	4.20	6.16	8.90	10.91	16.4	17.10	7.10	9.79	10.89
Power Supply	V / P / Hz	220V/1P/50Hz						380V/1P/50Hz		
Power Supply	V / P / Hz	208V/1P/60Hz						440V/1P/60Hz		
Fan	TYPE	Propeller Fan "Plastic"								
	QUANTITY	1							2	
Motor	Power	WATT	33	57	117	117 x 2				
	Current	AMP	0.35	0.5	0.89					
Power Supply	V / P / Hz	220V/1P/50Hz						380V/1P/50Hz		
Power Supply	V / P / Hz	208V/1P/60Hz						440V/1P/60Hz		
Coil	TYPE	Aluminium Louver Fin With Inner Groove Copper Tube								
CONNECTION										
Suction Line	INCH (OD)	1/2	5/8	3/4						
Liquid Line	INCH (OD)	3/8							1/2	
DIMENSION										
Width	mm.	859	1001	1011						
Height	mm.	581	632	835	1241					
Depth	mm.	360								
Weight	KGS.	44	48	64	75	88	92	110	120	
Refrigerant	TYPE	R-22 (R-407C On Request Only)								

NOTE:

All Ceilling Conceal Fan Coil Have DX or Chilled Water Cool.

GS-V-CU: Vertical Steel Cabnat Condensing Unit

FG-H-CU: Horizontal Fibre Glass Cabnat Condensing Unit

SPECIFICATIONS AND DESIGN ARE SUBJECT TO CHANGE WITHOUT PRIOR NOTICE.